

# ZWCAD 2025 Quick Start Guide

ZWsoft

📍 32/F, Pearl River Tower, No.15, Zhujiang West Road, Tianhe District, Guangzhou, China, 510623

☎ +86-20-38289780

📠 +86-20-38288676

✉ sales@zsoft.com

🌐 www.zsoft.com

🌍 China | Indonesia | France | Germany | Japan | Malaysia | Mexico | Saudi Arabia | Thailand | UAE | US | Vietnam



System Requirements	1
How to Get Your License Code	2
How to Install	5
How to Activate	6
I. With a Soft Key License	8
I.I Stand-alone License	9
I.II Network License	10
I.II.I Install Network License Manager	12
I.II.II Activate Network License	14
I.II.III Configure Network License	16
I.II.IV Floating and Borrowed License	18
II. With a Dongle License	22
How to Transfer Your License	24
I. Deactivation - ZWCAD	25
II. Deactivation - Network License Manager	26
Learn More	28

Note: This guide is applicable to ZWCAD and also ZWCAD MFG. We use ZWCAD as an example only, and you may refer to this guide for the installation, activation and deactivation procedure of ZWCAD MFG.

	Minimum System Requirements	Recommended System Requirements
<b>Operating System</b>	Microsoft® Windows 7 SP1 Microsoft® Windows Server 2008 R2 SP1 and above Microsoft® Windows Server 2012 Microsoft® Windows Server 2016 Microsoft® Windows 8.1 Microsoft® Windows 10 Microsoft® Windows 11	Microsoft® Windows 10 Microsoft® Windows 11
<b>Processor</b>	Intel® Pentium™ 4 1.5 GHz or equivalent AMD* processor	Intel® Core™ i5-10400 or AMD® Ryzen™ 5 3600 CPU or higher
<b>RAM</b>	2 GB	8 GB or more
<b>Graphics Card</b>	1 GB, support OpenGL 4.2	2 GB or more, support OpenGL 4.2 or higher, NVIDIA® GeForce™ GTX 1060 or AMD® Radeon™ RX 580 Series or higher
<b>Hard Disk</b>	2 GB free space in OS disk, 2 GB free space in installation disk	4 GB free space in OS disk, 2 GB free space in installation disk
<b>Resolution</b>	1024*768 VGA with True Color	1920*1080
<b>Pointing Device</b>	Mouse, trackball, or other devices	Mouse, trackball, or other devices
<b>DVD-ROM</b>	Any speed (for installation only)	Any speed (for installation only)

## How to Get Your License Code

Dear Sir or Madam:

Thank you for choosing ZWSoft. For license of the order DD20220722\*\*\*\*, End user: Sir or Madam, please click the link below:

[https://www.zwcad.com/order/license/en/sendrecord/237596915971185\\*\\*\\*\\*](https://www.zwcad.com/order/license/en/sendrecord/237596915971185****)

Yours faithfully

ZWSOFT Order Center

### STEP 1

You will receive an email from ZWSOFT Order Center after your order is confirmed. Click the link inside.

## How to Get Your License Code

ZWSOFT

www.zwsoft.com  
86-020-38289780  
ZWSOFT CO., LTD.(Guangzhou)

Send time: 2022-08-15 17:12:27

Customer: Sir or Madam

Mail code: Aug22-151713166685

Order number: DD20220722\*\*\*\*

#### Dear My Customer:

Please kindly confirm whether the following software list information is consistent with what you ordered. If the product you purchase contains future version upgrade, we will send you the relevant license when the new version is released.

If the information is incorrect, please contact your salesperson. This email is automatically generated by the system. Please do not reply directly.

If the information is correct, please click the button below to get the license key. When clicking the button, the system will automatically send the acknowledgement of receipt to our company's online delivery system. Please be noticed.

Sort	QTY	Node
1	ZWCAD 2023 Professional Network-Key	10

[Confirm, view the key](#)

[Print](#) [Download](#)

### STEP 2

Confirm the license information. Click [Confirm, view the key].

ZWSOFT

www.zwsoft.com  
86-(020)-38289780  
ZWSOFT CO., LTD.(Guangzhou)

Send time: 2022-08-15 17:12:27  
Mail code: Aug22-151713166685

Customer: Sir or Madam  
Order number: DD20220722\*\*\*\*

### Dear My Customer:

Please kindly confirm whether the following software list information is consistent with what you ordered. If the product you purchase contains future version upgrade, we will send you the relevant license when the new version is released.

If the information is incorrect, please contact your salesperson. This email is automatically generated by the system. Please do not reply directly. If the information is correct, please click the button below to get the license key. When clicking the button, the system will automatically send the acknowledgement of receipt to our company's online delivery system. Please be noticed.

Sort	QTY	Node
1	ZWCAD 2023 Professional Network-Key	10

The license of the product you purchased this time is as below (if the product you purchased includes future version upgrade, we will send you the relevant license when the new version is released) :

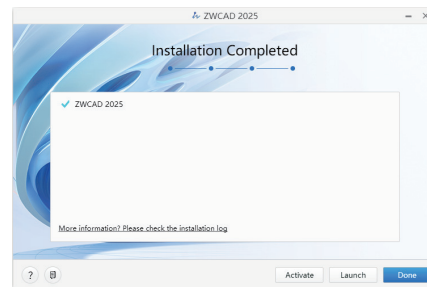
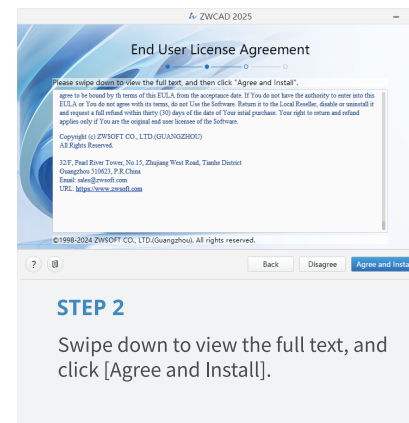
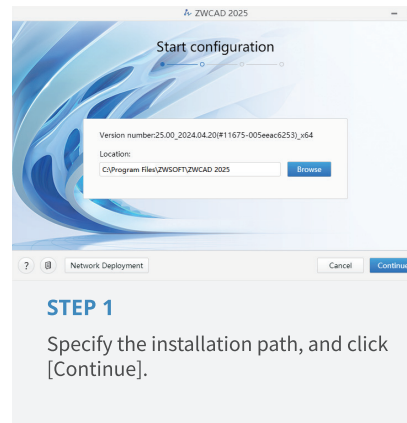
Product Name	Node	License
ZWCAD 2023 Professional Network-Key	10	License : 28E3-U3N5-9/CV-JYQ-HY99-****

Please record the license in time. If you have any questions, please contact your salesperson. This email is automatically generated by the system. Please do not reply directly.

Print Download

## STEP 3

You will find your license code on this page.



There are 2 ways to activate ZWCAD.

①

XXXX-XXXX-XXXX-XXXX-XXXX-XXXX

## Soft Key Activation

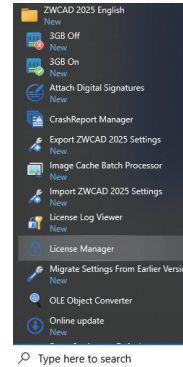
A 24-character license code is used to activate.

②



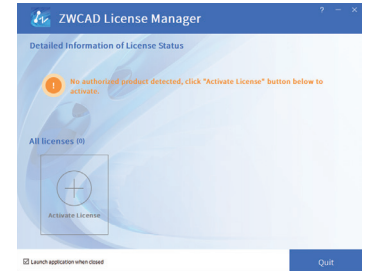
## Dongle Activation

A dongle and an 8-character license code are used to activate.



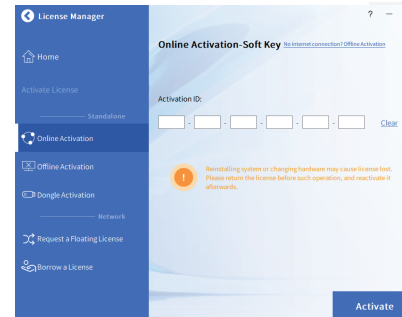
### STEP 1

Launch **License Manager** from the Windows Start Menu.



### STEP 2

Click [Activate License].



### STEP 3

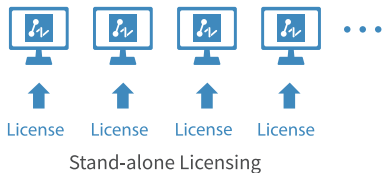
- > Choose the activation method you use.
- > For Soft Key user, please refer to Page 6 - 18;
- > For Dongle user, please refer to Page 19 - 20.

## I. With a Soft Key License

There are 2 licensing options for Soft Key license.

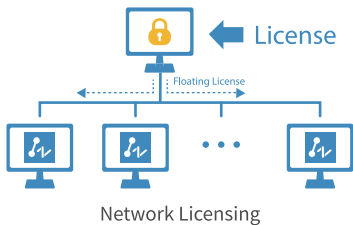
### Stand-alone (Page 7)

You need to activate each computer with an individual license.

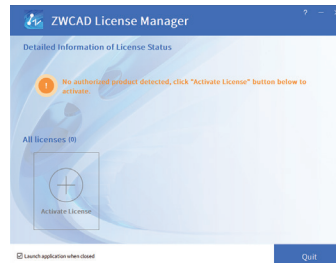


### Network (Page 8 - 14)

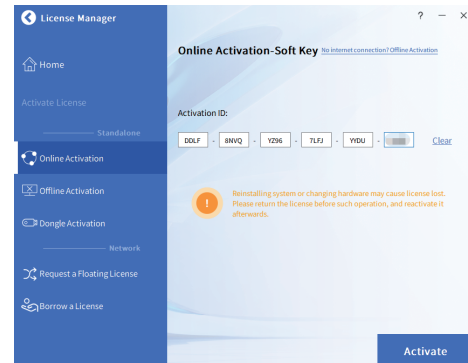
You need to activate the license on a server first, then come back to the client side to obtain a license from the server via a network connection.



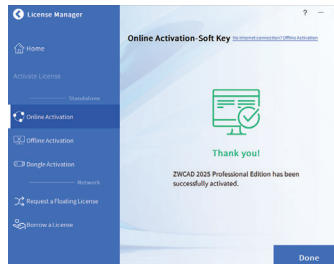
## I.I Stand-alone License



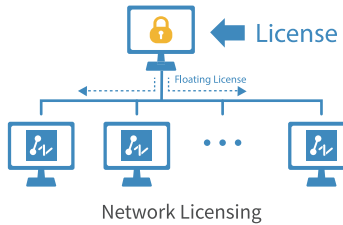
**STEP 1**  
Click [Activate License].



**STEP 2**  
>Click [Online Activation].  
>Fill in the license code.  
>Click [Activate].  
>You will see a success page with your license information.



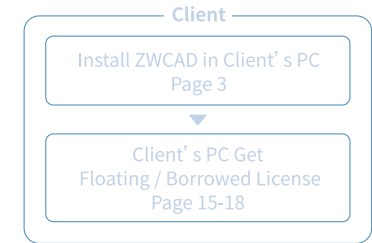
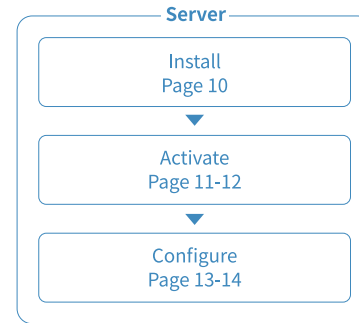
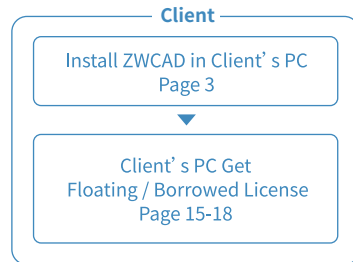
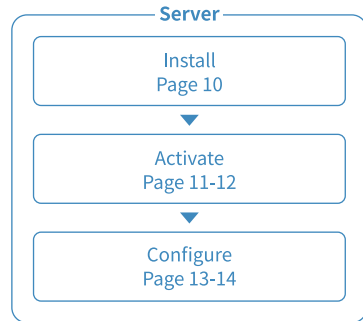
The activation should be processed with Internet access. If the Internet access is limited, please choose Offline Activation and follow the guide to activate.

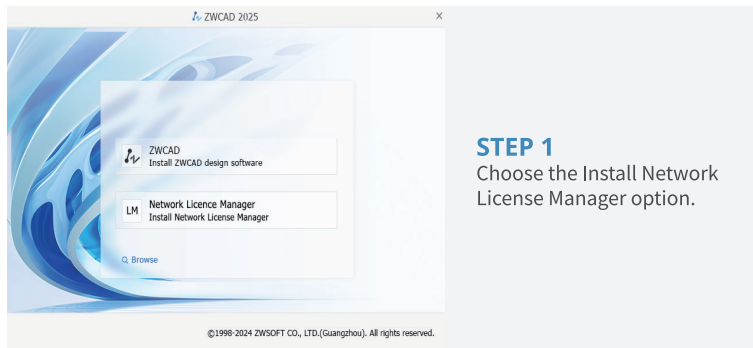


Network License means the clients get their licenses from a network server that is authorized with a ZWCAD Network License. A Network License is ideal for medium to large organizations with many users. Admin can manage licenses by allowing, limiting or reserving license seats for specific users or groups.

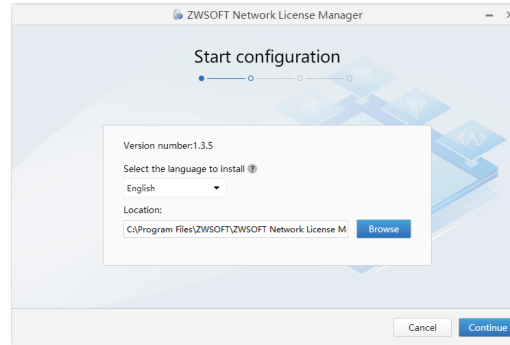
A Network License Manager (NLM) should be installed on the server and both the server and the client need to be configured to enable licensing.

Please refer to the flowchart below.

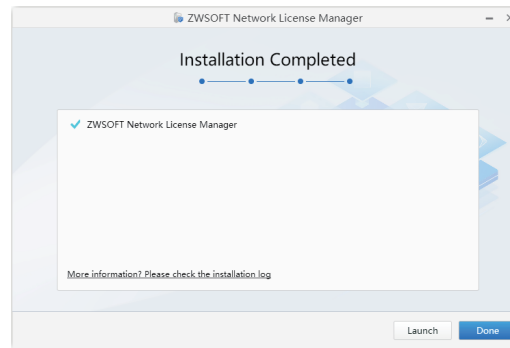




**STEP 1**  
Choose the Install Network License Manager option.



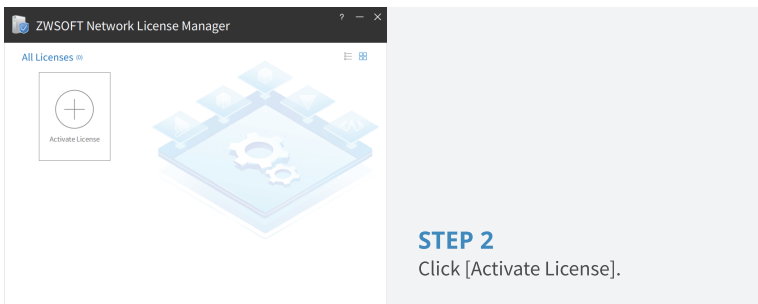
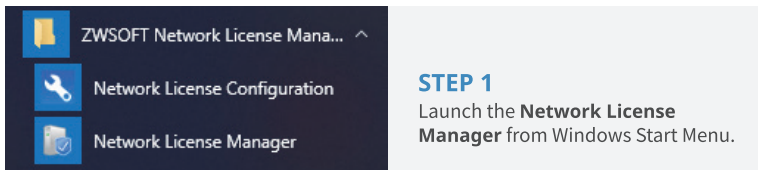
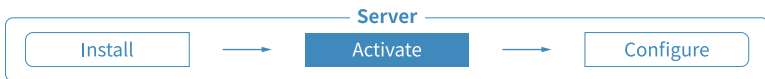
**STEP 2**  
Select the language and location. Click [Continue].



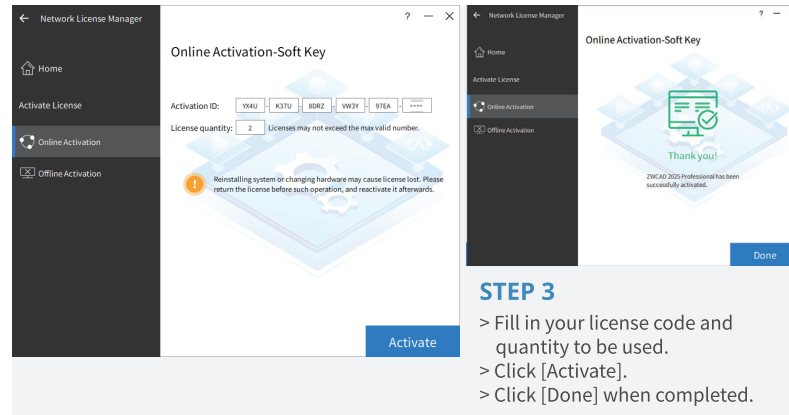
**STEP 3**  
Click [Launch] when completed.



## I.II.II Activate Network License

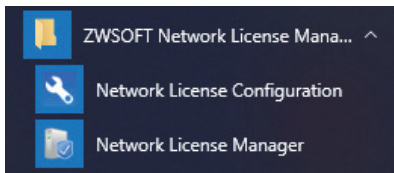


## I.II.II Activate Network License

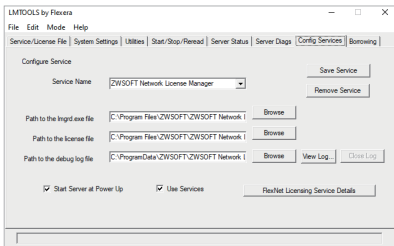


The activation should be processed within Internet access. If the Internet access is limited, please follow the Note at the bottom to go with Offline Activation.

## I.II.III Configure Network License

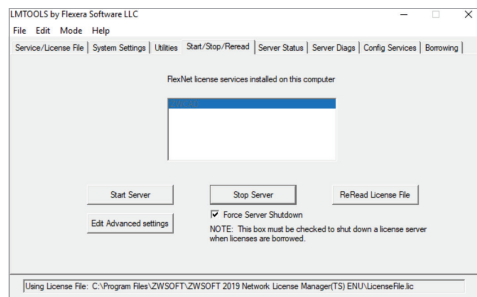


**STEP 1**  
Launch the **Network License Configuration** from Windows Start Menu.

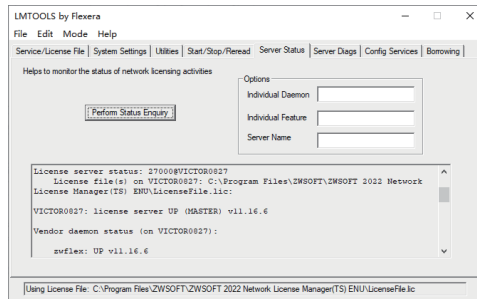


**STEP 2**  
> Go to the tab **Config Services**.  
> Click [Save Service].

## I.II.III Configure Network License



**STEP 3**  
> Go to the tab **Start/Stop/Reread**.  
> Click [Start Server].



**STEP 4**  
> Go to the tab **Server Status**.  
> Click [Perform Status Enquiry].  
> Check the text box below to confirm the status.  
> You will see the total amount of licenses that have been issued.

## I.II.IV Floating and Borrowed License

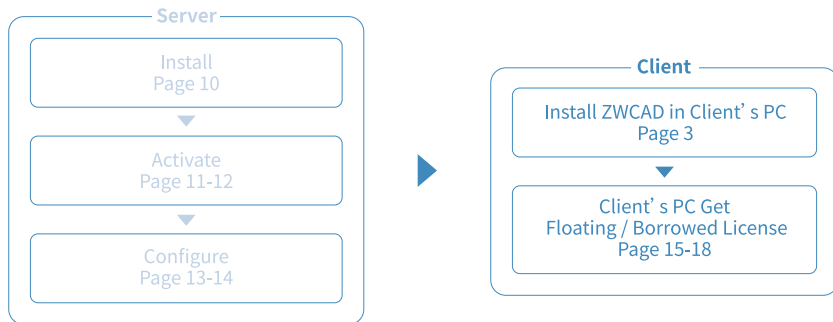
There are 2 ways to obtain license from server, which are Floating and Borrowed. You can choose one of them to activate the ZWCAD on the client side.

### Floating:

The client side can obtain a license from the server automatically when they start ZWCAD. The server dynamically allocates a network license, reclaims the license when the product is inactive and re-allocates it. Network connection between clients and server is always required, which is suitable for in-house working.

### Borrowed:

The client side can obtain a license from the server manually and store it locally for a specified period of time (maximum 180 days), so that it can still have the authorization when disconnected from the server, which is suitable for outdoor working.



## I.II.IV Floating and Borrowed License



### STEP 1

Install ZWCAD according to the installation instruction from Page 3.

### STEP 2

Launch the license manager according to the instruction from Page 5 and choose **Activate License**.

The screenshot shows the License Manager application window. The left sidebar has options: Home, Activate License, Online Activation, Offline Activation, Dongle Activation, Request a Floating License, and Borrow a License. The main area is titled 'Floating License-Soft Key' and contains fields for 'Server Name/IP' (192.168.58.100) and 'Port' (27000). A 'Query' button is below these fields. A dropdown menu for 'License on server' is open, showing options: ZWCAD 2025 Professional Edition, ZWCAD 2025 Standard Edition, ZWCAD 2025 Mechanical Professional Edition, and ZWCAD 2025 Architectural Professional Edition. An 'Activate' button is at the bottom right. A warning icon and text are visible: 'Server Name/IP: enter the computer name or IP address of the network license server. Port: the default value is 27000, can be changed accordingly.'

### STEP 3

- > Choose **Request a Floating License**.
- > Fill in the IP address or server name.
- > Select product version.
- > Click [Activate].

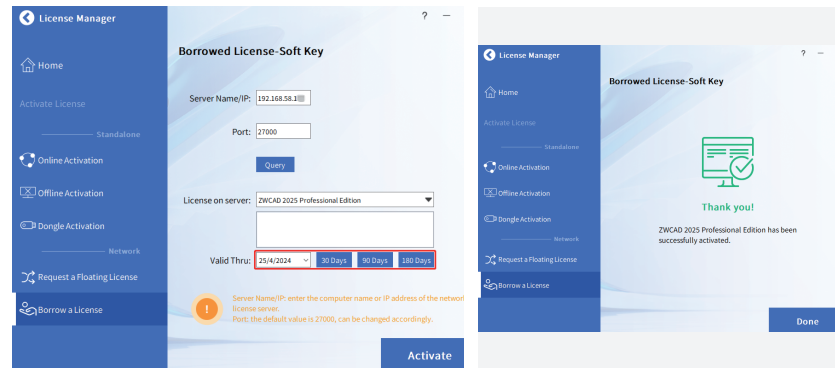
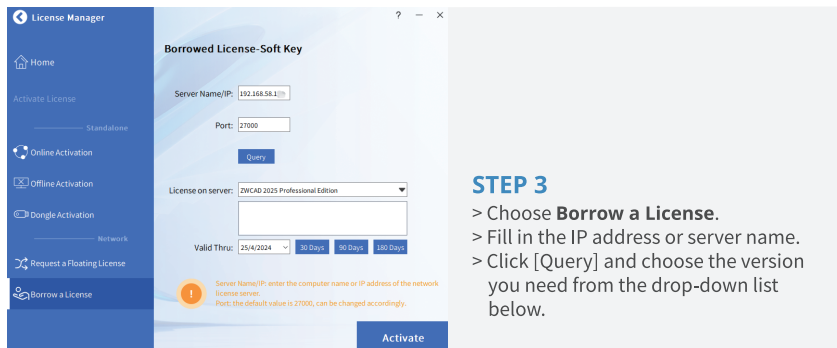


### STEP 1

Install ZWCAD according to the installation instruction from Page 3.

### STEP 2

Launch the license manager according to the instruction from Page 5 and choose **Activate License**.



Do not change the default Port value 27000, unless it has been specified.

## II. With a Dongle License



Dongle only supports stand-alone license.  
(No network license available)

The Product ID can be detected in License Manager after inserting the dongle into the computer.

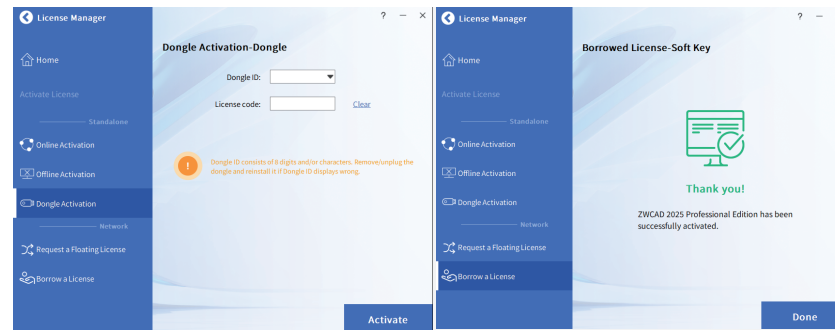
## II. With a Dongle License

### STEP 1

Plug the dongle into your computer, and wait until the light on the dongle stops blinking.

### STEP 2

Follow the introductions from Page 5 and choose [Dongle Activation].



### STEP 3

- > Make sure the Product ID is detected and displayed.
- > Input the corresponding license code into the License Code blank.
- > Click [Activate].

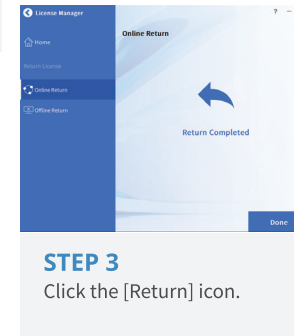
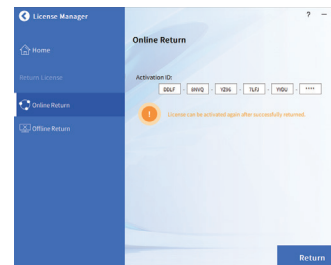
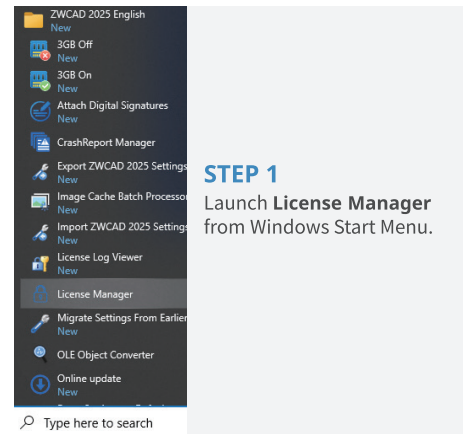
## How to Transfer Your License

If you plan to install your current ZWCAD onto another computer or have to do it because of a software or hardware change, e.g. replacing or reformatting a system hard drive, you need to transfer your license(s).



To transfer, you can deactivate your current license on client side, or on server, then activate it again on any new computer.

## I. Deactivation - ZWCAD

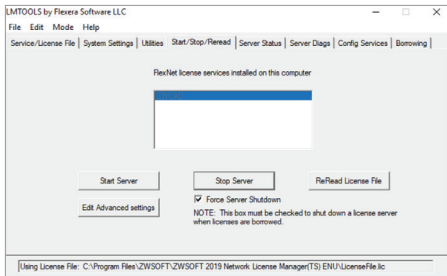


The deactivation should be processed with Internet access. If the Internet access is limited, please choose Offline Return then follow the guide to deactivate.

## II. Deactivation - Network License Manager



**STEP 1**  
Launch the **Network License Configuration** from Windows Start Menu.

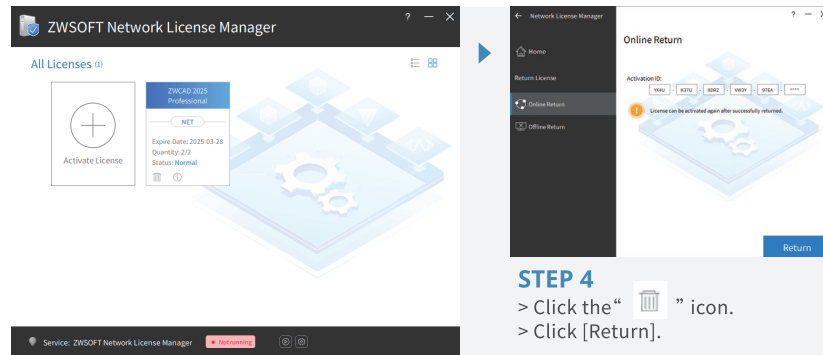



**STEP 2**  
> Go to the tab **Start/Stop/Reread**.  
> Check **Force Server Shutdown**.  
> Click [Start Server].

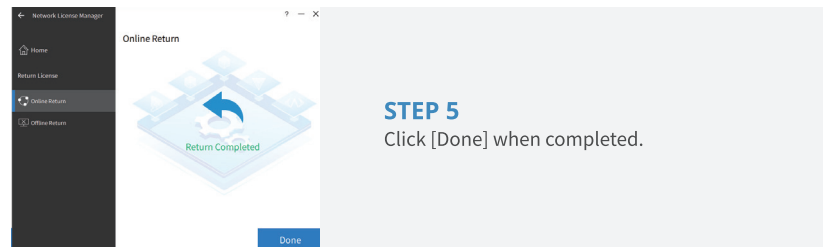


**STEP 3**  
Launch the **Network License Manager** from Windows Start Menu.

## II. Deactivation - Network License Manager



**STEP 4**  
> Click the “” icon.  
> Click [Return].



**STEP 5**  
Click [Done] when completed.



The deactivation should be processed with Internet access. If the Internet access is limited, please choose the Offline way then follow the guide to deactivate.

## Learn More

If you want to learn more about Installation and Activation, please launch ZWCAD then press F1 or input Help to open the Help system.

You can find the Installation and Registration Guide from the menu on the left side, or visit:

[www.zwsoft.com/support/zwcad-instruction-installation](http://www.zwsoft.com/support/zwcad-instruction-installation)

